

Electronic Temperature Controller

The ELTC-21 is an electronic temperature controller with digital display for top-hat rail mounting. The temperature is measured by a Pt100 sensor, processed by the microcontroller and displayed. After having evaluated the actual and preset values, the appropriate output relays are switched, depending on the configuration.

Advantages:

- LED display operable down to $-25\text{ }^{\circ}\text{C}$
- Programmable $-50\text{ }^{\circ}\text{C}$ up to $+400\text{ }^{\circ}\text{C}$
- For switching 16 A resistive load
- Alarm contact
- Pt100 with 2 or 3 wires

Applications:

- Industrial applications
- Mechanical, electrical and plumbing (MEP)



Type **ELTC-21**





Technical Information

Type ELTC-21

Data

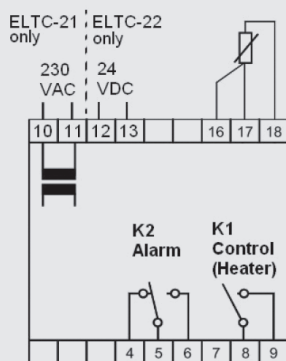
■ Operating voltage	230 V
■ Power consumption	Max. 4 mA, < 5 W
■ Switching capacity, relay 1	16 A close contact (heating)
■ Switching capacity, relay 2	8 A, changeover contact (alarm)
■ Operating temperature	-25 up to +55 °C
■ Storage temperature	-25 up to +60 °C
■ Temperature range	0 up to +400 °C, optional configuration
■ Sensor connection	Pt100 2-wires, 3-wires, optional configuration
■ Display	LED, red
■ IP rating	IP 20
■ Mounting	Top-hat rail
■ Dimensions [w x h x d in mm]	51.5 x 87.5 x 58.0

Sensors and display: It is possible to use two types of sensors, either Pt100/2-wire or Pt100/3-wire. Optional display of °C or °F values. In case of use of a Pt100/2-wire unit the actual temperature value can be corrected. Range +/- 10K or +/-18F, respectively. In case of use of a Pt100/3-wire unit the temperature is automatically corrected. Also suitable for use with ELTF-PTE_x 1 and 2 sensor.

Relay configuration: relay 1: regulator, relay 2: alarm

Temperature alarm: If the actual value deviates from the preset limit values, an alarm is given and transmitted via alarm relay K2.

Wiring diagram



Type	Art. No.
ELTC-21	0610093